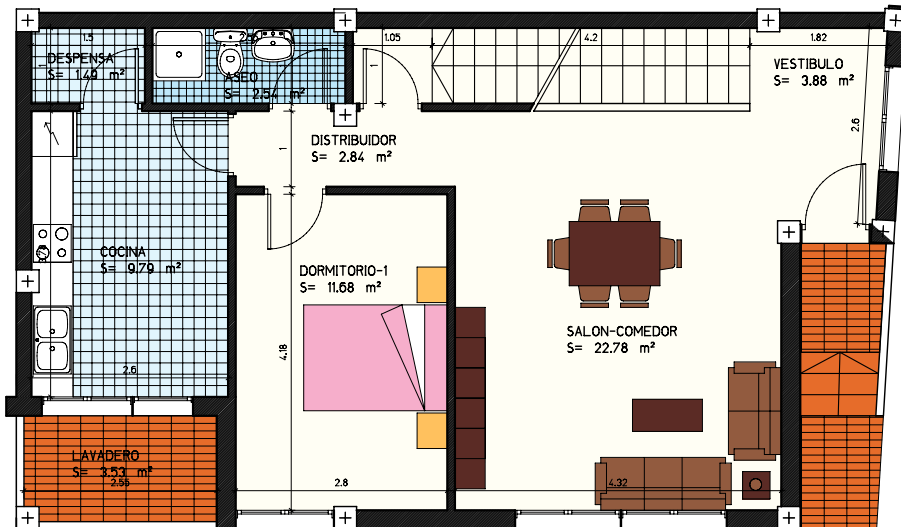
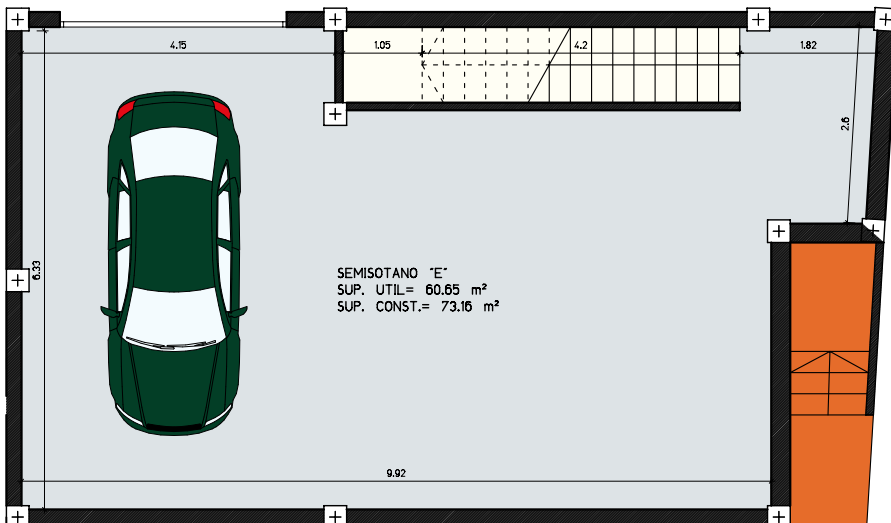


VIVIENDA "E"
 PLANTA ALTA
 SUP. UTIL= 63.76 m²
 SUP. CONST.= 77.25 m²



VIVIENDA "E"
 PLANTA BAJA
 SUP. UTIL= 58.53 m²
 SUP. CONST.= 77.40 m²



SEMISOTANO "E"
 SUP. UTIL= 60.65 m²
 SUP. CONST.= 73.16 m²